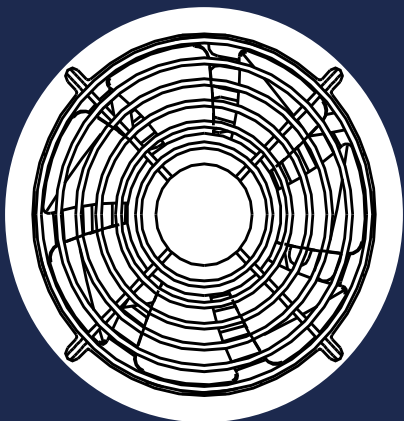




DuraVenti-H1 (Intake) DuraVenti-H2 (Exhaust)

CRAWLSPACE AND BASEMENT VENTILATION FAN



USER MANUAL

WELCOME

Thank you for choosing BaseAire. We are committed to product quality and friendly customer service. If you have any questions or suggestions, please don't hesitate to [contact](#) us.

Visit www.baseaire.com and click contact for our contact information.

EMAIL

sales@baseaire.com

WEB

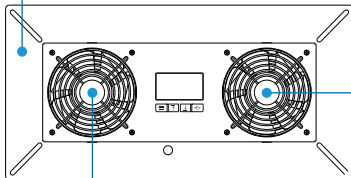
www.baseaire.com

MANUAL INDEX

Key Features	Page 1
Product Contents	Page 1
Installation Steps	Page 2
Activating The Fan	Page 4
Programming	Page 5
Warranty	Page 11

KEY FEATURES

It features a fan made of galvanized stainless steel.



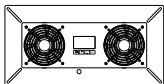
BALL BEARINGS

The unit comes with two ball bearings that don't age fast. Thus, it guarantees a long service with a life span of more than 65,000 hours.

PWM MOTOR

It comes with a low energy efficient low noise multi-gear operation DC motor.

PRODUCT CONTENTS



FAN SYSTEM(X1)



THERMAL PROBE(X1)



POWER ADAPTER(X1)



WALL ANCHORS(X4)

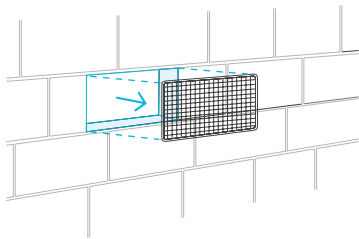


MACHINE SCREWS(X4)

INSTALLATION STEPS

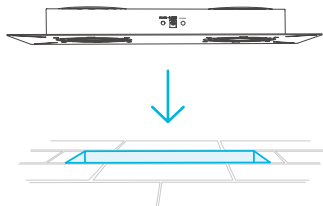
STEP 1

Start by removing the fitted grilles and vents. Install the fan using the cover on the vent.



STEP 2

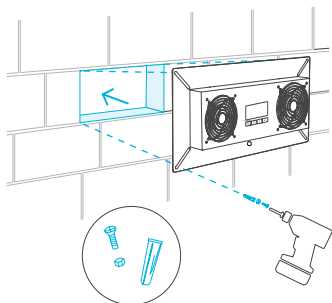
Consider the direction of airflow when installing the fan. It should be installed above the vent.



INSTALLATION STEPS

STEP 3 (Base Brick)

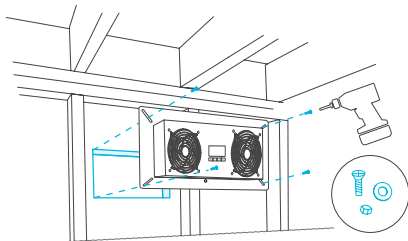
The device should be installed on a block or a base brick. You will need to utilize mounting holes in all the four corners of the mounting panel. Use a drill bit to drill whole 5 /16 inches and install the anchor on the wall and use screwdrivers to fix the unit to the wall.



DuraVenti-H1/H2 Illustration shown above.

STEP 4 (Mounting It On The Wall Surface)

If you will be mounting the unit on the cabinet wall edge, mesh with wood head or grill, you will need to use a machine to determine its location.

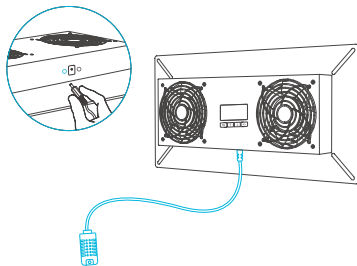


DuraVenti-H1/H2 Illustration shown above.

ACTIVATING THE FAN

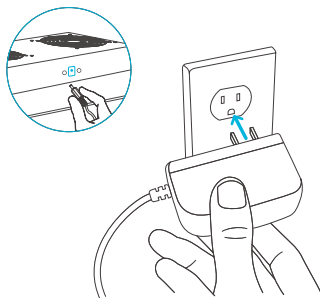
STEP 1

Set the desired humidity and temperature. You should then insert the humidity probe and the temperature into one of the ports as specified.



STEP 2

Connect it to power by inserting the power adapter in the socket.



PROGRAMMING

(DuraVenti-H1/DuraVenti-H2 Screen Display)

1.CHOOSE THE BUTTON FROM THE SETTING MENU

You have the ALARM, HUMID SETTING, TIMER, TEMP, SPEED, HOME to choose from.

2.SELECT USING THE UP AND DOWN BUTTON

Adjust the setting mode using the up and down button. Press the up button to increase and the down button to decrease.

3.LEAF-SHAPED BUTTON

Press the button to exit the current interface and return to the "HOME" interface, then press the button to turn it off.

6.THE CONTROLLER MODE

Select the loop through the modules to help display the current mode of the controller.

9.TEMPERATURE SETTING DISPLAY

The area displays the high and the low temperatures if any temperature is not selected.

4.DETECT HUMIDITY

It displays the humidity of the air as detected by the detector. It should give the humidity % when no probe is inserted.

7.THE ICON

The area displays the controller alerts, loop mode, screen lock.

10.HUMIDITY SETTING AND DISPLAY

The area displays both the high and the low humidity if the % humidity is not set.

5.DETECT TEMPERATURE

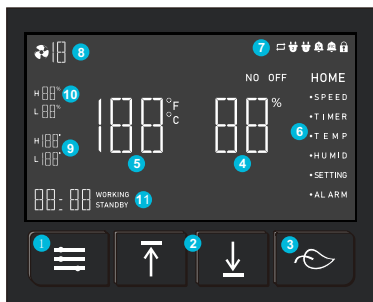
Displays the temperature detected. If no probe is inserted, it will display the temperature in °C or °F.

8.SPEED

It displays the current speed of the fan.

11.DISPLAY TIME SETTING

It displays the time the fan has been running and the time the fan was on standby.



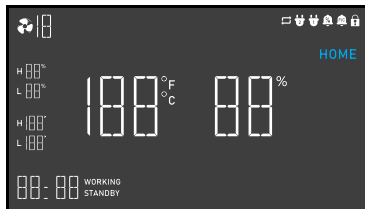
PROGRAMMING

CHOOSE THE BUTTON FROM THE SETTING MENU

Select button the ALARM, SETTING, HUMID, TEMP, TIMER, SPEED, OFF, HOME.

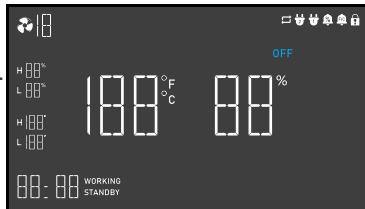
HOME

It allows the fan to operate according to the setting selected in the other menus.



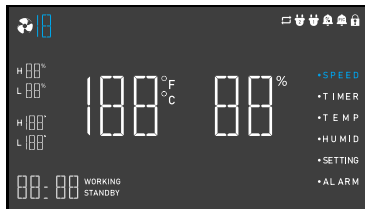
OFF

When the fan is in this menu, it stops working irrespective of the humidity or the timer is chosen.



SPEED

To set it in this menu, all you need to do is to choose the speed at which the fan will operate.



PROGRAMMING

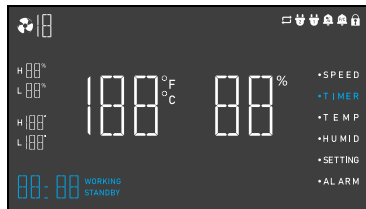
TIMER

When in this menu, the first thing you need to do is to enter the working options. You should then press the up or down button to set the fan's running time. Ensure to turn off the timer when setting it to the "--: --" position.

Press the menu when you want to set it to STANDBY. Scroll up/down to set it in the standby state. When you select the "--: --" setting, the timer will be OFF.

When it is in STANDBY or WORKING, the fan gets into the cycle mode.

Press the menu once again to bring it up. If nothing happens to it in 10 seconds it returns to HOME page. This will make the fan to run according to the earlier specified settings.

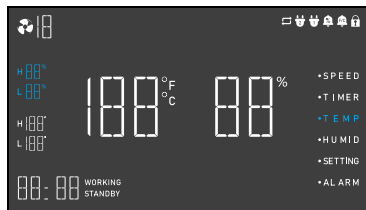


TEMP

While in this menu, you should go to the high-temperature option. Scroll up and down to set your high trigger temperatures. If the probe detects temperatures above those that have been set, it activates the fan. It will increase the speed slowly until it reaches the desired speed. When the temperature falls below the set low, the speed of the fan reduces. It will continue reducing until it stops.

Press the menu to escape from the low-temperature option. You can then scroll up or down and set your low-temperature trigger. If the temperature measured by the trigger is lower, it activates the fan to start running. It does so until it reaches the desired set speed. Also, when the measured temperature increases more than the set low temperature, it makes the speed to reduce. It will continue to reduce until the fan stops running.

Press the menu key once again to activate it. If no operation is chosen in 10 seconds, it returns to HOME page. The fan will then run as per the settings selected previously. Press up/down to the chosen percentage. It will turn off the existing functions.



PROGRAMMING

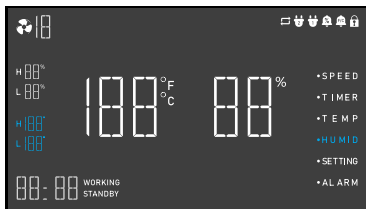
HUMID

The menu allows you to go to high humidity option. You will need to press up/down so that you select the high humidity trigger. If the probe measures a humidity option that is above the set option, it triggers the fan to start running. The fan's speed increases slowly until the set speed is attained. If the measured humidity is lower than the set speed, the fan's speed starts declining. It will reduce until the fan stops running.

Once more, press the menu key and skip the low wet option. Scroll up or down to set your selected low trigger.

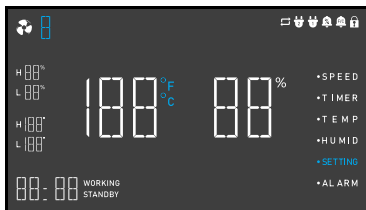
If the humidity measured by the probe is low, the fan starts running. It slowly gathers speed until the set humidity is attained. When the measured humidity is higher than the set low humidity, the speed of the fan will slow down. It will continue to slow down until the fan stops.

Press the menu key once again to activate it. If nothing happens to it in 10 seconds it returns to the HOME page. While in this mode, the fan runs according to the previously selected settings.



SETTING

While in this menu, you can scroll up and down to make the screen bright. You can also scroll up and down and chose to convert °F to °C.



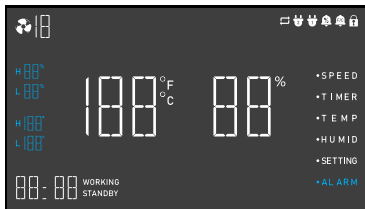
PROGRAMMING

ALARM

While in this mode, the first thing you need to do is to get into the humidity option. You will do this by scrolling up and down to select a high-temperature trigger.

To skip the low wet option, press the menu key and press the up/down to enable you to set the low wet trigger.

Press the second menu key to move to the high-temperature option. Scroll up and down and select your high-temperature trigger.



Press the menu key once again to move you to the low-temperature option. You will then scroll up or down to enable you to choose the low-temperature trigger. If the values of the humidity or temperature fall below the trigger point, the fan ignores the settings. Thus, it triggers the alarm. Turning to the 10th gear.

Press the menu key again to activate it. If you don't issue commands within 10 seconds, it returns to the HOME page. While in this mode, the fan runs according to the earlier specified settings.

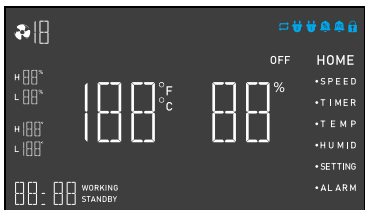
THE CONTROLLER LOCK

While in the HOME, press the menu button and up button for at least 5 seconds to make the fan to enter the lock mode. You will need to long-press the button and up button once again to release the lock mode. It will also hide the lock icon. Note that at this point, you cannot change the parameters by pressing any other key. But the lock enters the standby mode if it lasts for more than 3 minutes. The screen will shut itself but the fan will continue operating at the background. It will operate as per the previous settings.

PROGRAMMING

WARNING ICON

The alarm icon will flash when the controller wants to inform you that a pending alarm is about to be triggered.



Display lock alarm

The icon will be displayed if the screen is locked. If the icon is in the sleep mode and it gets pressed it will make the screen to flicker. But when you exit the lock mode, the icon disappears.

Humidity Alarm icon

It beeps or flashes when the low or the high alarm is triggered. To turn off the sound, it will require that you press any key.

Temperature alarm icon

It flashes when the lowest or the highest temperature is triggered. To turn the buzz or the sound off, it requires you to press any key.

2,1 Icon of host

The icon lights up when it is inserted. It corresponds to 2 interfaces.

Loop icon

It is a standby icon that will be displayed on the home page when enabled. It is normally set up in the TEMP .



WARRANTY

It is our commitment that BaseAire sells its products free from any manufacturing defects for two years. The period starts from the date you make the purchase. However, if defects are found in the workmanship or the material used to make the product, BaseAire will take appropriate steps as stipulated in this warranty to resolve the issue. The warranty applies to products purchased, sold or received from BaseAire authorized dealers. The warranty covers products that have malfunctioned or become defective. The plan takes effect from the date it was purchased. It expires two years from the date it was purchased. If the product becomes defective during this period, you will get a full refund. Alternatively, BaseAire may choose to replace the product. However, the warranty does not cover misuse or abuse of the product. Misuse and abuse includes physical damage to the product and immersing it into water. It also includes incorrect installation, incorrect voltage input and deploying it to any other purpose other than what it is intended. BaseAire will not be responsible for collateral or indirect loss caused by the product. Also, we do not offer any guarantee of damage caused to the property by the normal wear and tear. Such damage includes scratches or normal wear and tear. For detail about our distributors or dealers contact our customer service sales@baseaire.com. Our working time is 8:00 am until 5:00 pm monday to friday PST.



If you are not 100% satisfied with this product, we will be happy to replace it or issue you a full refund. Please contact us!

www.baseaire.com